

## SALLIE

A powerful and efficient all-purpose truck

### Production

Grass Valley Kayenne Switcher Frame  
Grass Valley Kayenne 3-Stripe 25-Button Control Panel with Aux  
3.5 M/Es available, 48 input, 24 output, FlexiKey and Double Take  
(6) Keyers per ME, (2) iDPMs, ImageStore  
Lance Controller

### Records

(2) EVS XT2 6-Channel  
(1) EVS XT2 4-Channel Spotbox  
(1) EVS XFile 3  
(1) AJA HELO H.264 Recorder  
(12) AJA KiPro Rack Recorders

### Camera Equipment

Wired for up to 8 CCUs  
(8) GV LDX-80 Series Triax Cameras  
1080i/720p 59.94  
TAC Fiber Adapters Available  
(5) HH Viewfinders  
(7) 7" Studio LCD Viewfinders  
(5) Fujinon 20x ENG Lenses  
(1) Fujinon 13x4.5 Wide Angle Lenses  
Additional Camera/Lens Options Available

### Communications

RTS ADAM-M 64 Port Digital Matrix  
(12) RTS PL Channels  
(4) RTS Telephone Interface  
(3) QKT Telephone Interface  
(8) Wet IFB Channels  
(2) Biscuit Boxes

### Connectivity

(2) VoIP Phone Lines

### Terminal Equipment

144x252 GV NV8140 Video Router  
32x32 Audio Embed/De-Embed  
(10) Configurable Integrated Multiviewer Outputs  
(2) Quad Split Multiviewers  
(12) HD Frame Syncs  
TSL Tallyman Tally Interface

### Graphics Facilities

(1) Ross XPression Dual Channel - SW ver 10.5

### Cable Inventory

3000' Triax Camera Cable  
1200' DT-12 Cable  
(2) 500' TAC-12 Fiber Mult  
(2) 100' TAC-12 Fiber Mult

### Audio Facilities

Calrec Artemis Digital Mixing Console  
32 Fader / 340 DSP Inputs  
32x32 Analog, 128x128 MADl

### Support

(2) Fostex Speakers  
(3) Throwdown HD Monitors  
(4) SDI-HDMI Converters  
(4) Fiber Rattler Sets  
(2) Decimator MD-Cross Converters

### Power Requirements

1 Phase, 150 Amps, 208 Volts  
2 Hot Legs, 1 Ground, (No neutral required)  
150' feeder cable with camlock connectors

### Truck Dimensions

GVW - 48,000 Lbs  
Dimensions - 45ft L, 13.8ft W, 13.5ft H working footprint

### Resolutions & Frame Rates

1080i, 720p  
59.94

For mobile unit inquiries, call or text at 877-959-8638 or e-mail [contact@tndv.com](mailto:contact@tndv.com)

Mobile unit equipment complement is subject to change without notice. Additional equipment is available as needed.

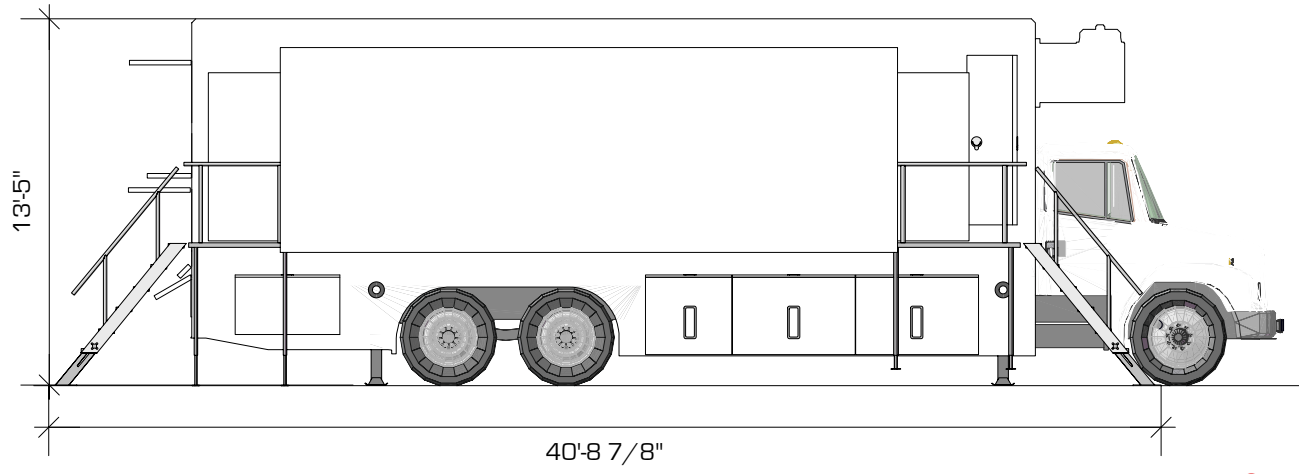
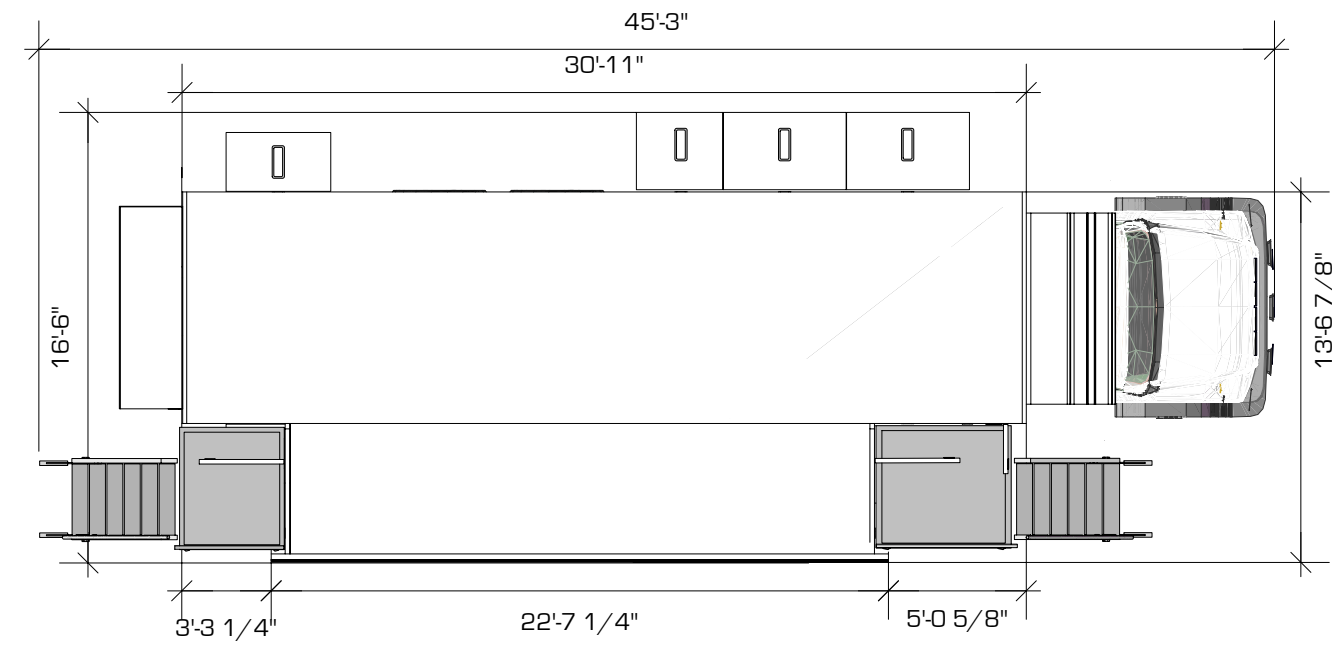


TNDV is a division of the Live Media Group Holdings family of companies



Visit us online at [tndv.com](http://tndv.com)

TNDV: Television  
515 Brick Church Park Dr  
Nashville, TN 37207  
(877) 959-TNDV



1 TNDV SALLIE 3D 2024  
Scale: 1:25



TNDV  
TELEVISION  
contact@tndv.com  
877-959-TNDV  
515 Brick Church Park Drive  
Nashville TN 37207

SALLIE  
40' EXPANDO  
TRUCK

TNDV SALLIE

FILE: TNDV\_SALLIE\_3D\_2024.vwx  
PRODUCTION DRAWINGS BY: Joseph Fetzer

SHEET INFO:  
SALLIE  
DIMENSIONS  
TOP/SIDE

NOTES:

UPDATED:  
Date: 9/10/24  
Time: 9:59:00 AM  
Ver.005



**SALLIE  
40' EXPANDO  
TRUCK**

**TNDV SALLIE**

FILE: TNDV\_SALLIE\_3D\_2024.vwx  
PRODUCTION DRAWINGS BY: Joseph Fetzer

SHEET INFO:

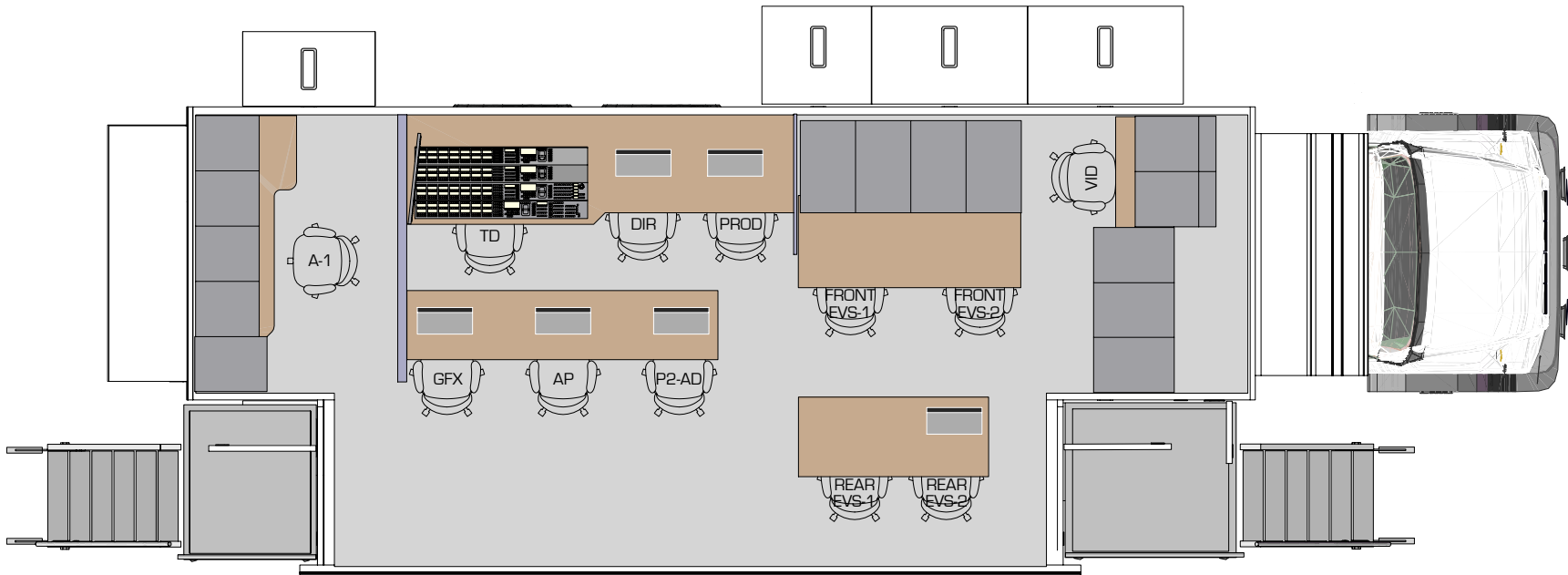
SALLIE  
FLOOR PLAN  
SEATING  
ASSIGNMENTS

NOTES:

UPDATED:

Date: 9/10/24  
Time: 9:59:08 AM

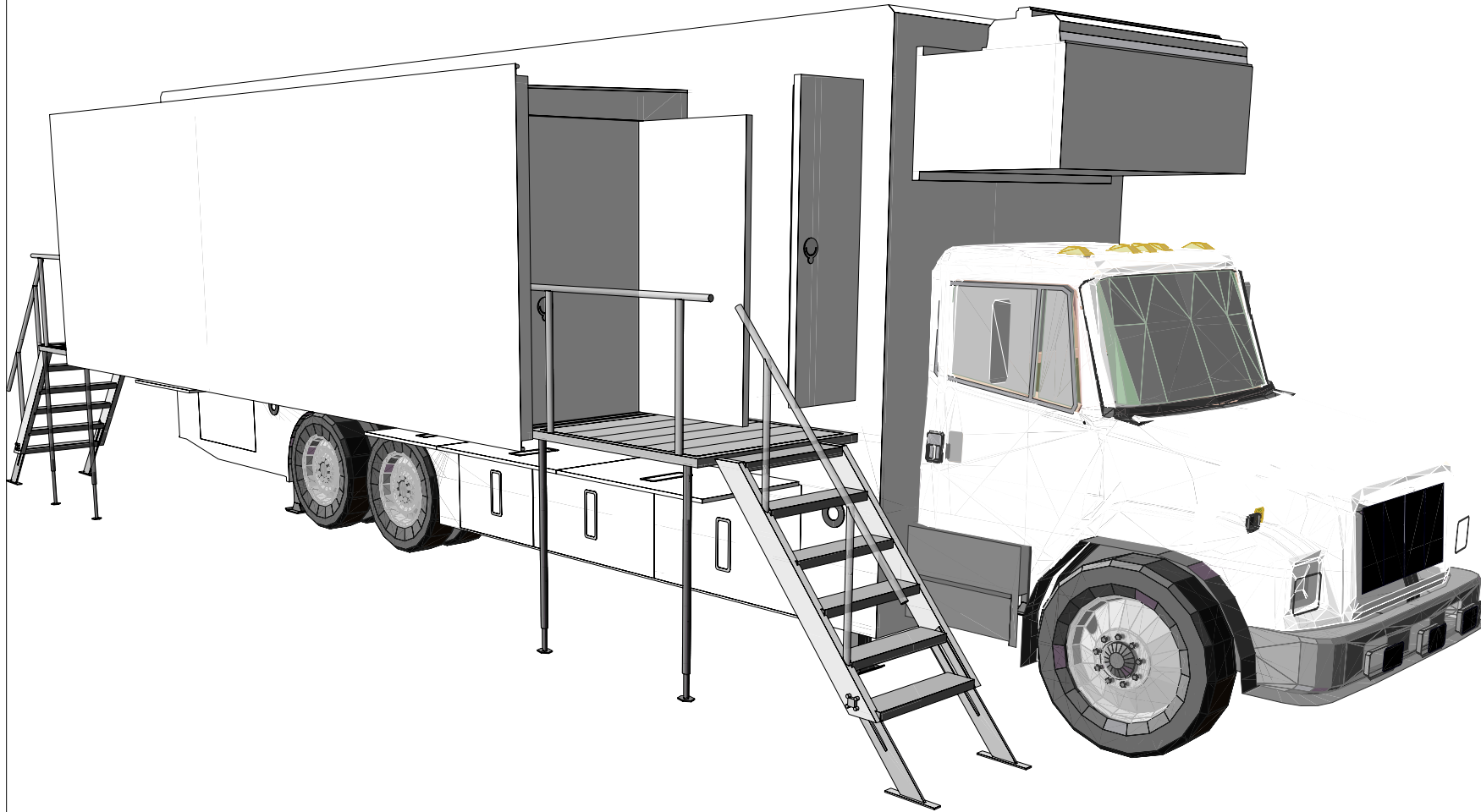
Ver.005



#	LOCATION	NAME:
1	A-1	
2	TD	
3	DIR	
4	PRODUCER	
5	GFX	
6	A PRODUCER	
7	P2-AD	
8	FRONT EVS-1	
9	FRONT EVS-2	

#	LOCATION	NAME:
10	REAR EVS-1	
11	REAR EVS-2	
12	SHADER	

2 TNDV SALLIE 3D 2024  
Scale: 1:18



4 TNDV SALLIE 3D 2024  
Scale: 1:31

**TNDV**  
TELEVISION



TNDV  
TELEVISION  
contact@tndv.com  
877-959-TNDV

515 Brick Church Park Drive  
Nashville TN 37207

**SALLIE  
40' EXPANDO  
TRUCK**

**TNDV SALLIE**

FILE: TNDV\_SALLIE\_3D\_2024.vwk  
PRODUCTION DRAWINGS BY: Joseph Fetzer

SHEET INFO:

SALLIE  
ISOMETRIC  
VIEW

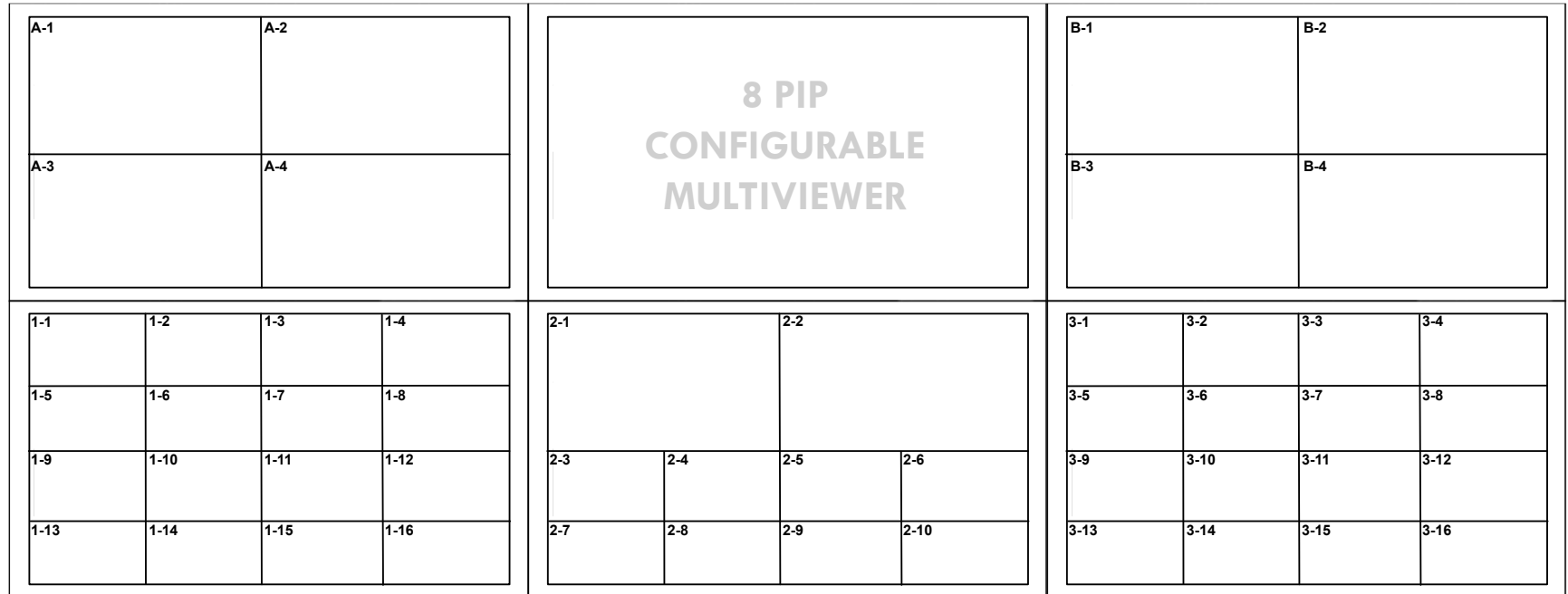
NOTES:

UPDATED:

Date: 9/10/24  
Time: 9:59:12 AM

**Ver.005**

# “SALLIE”

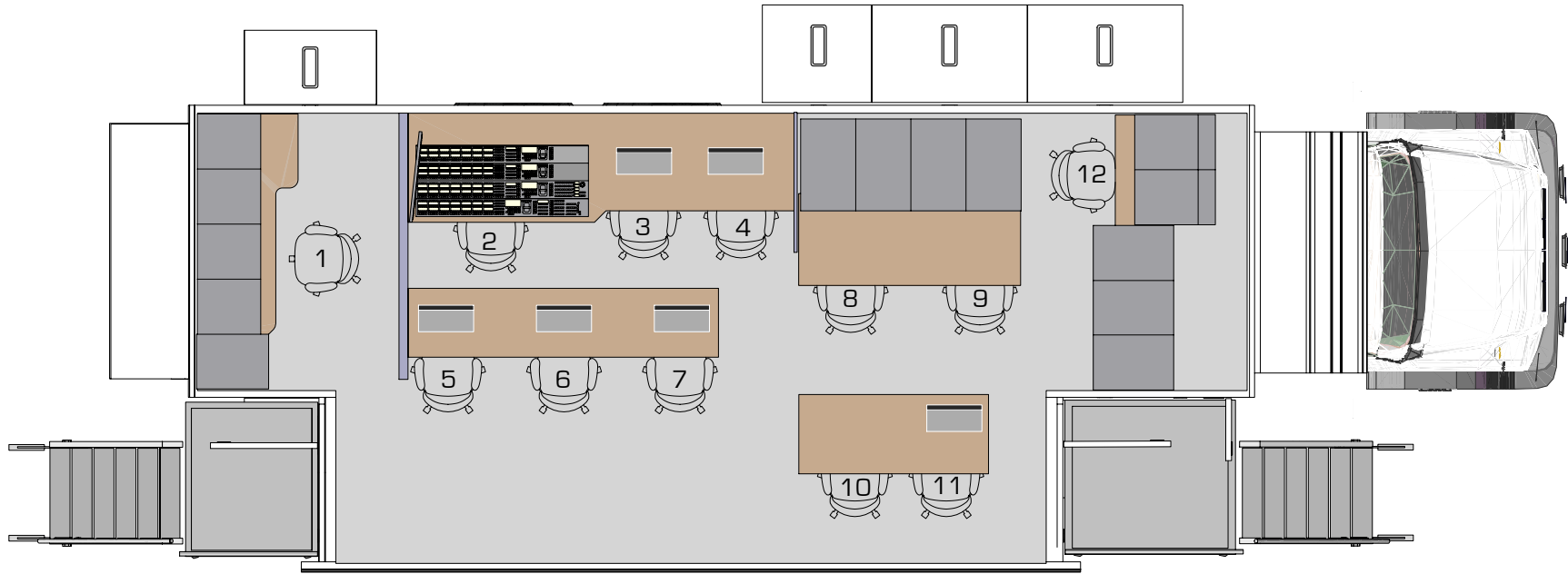


ALL LOWER MONITORS ARE FULLY CONFIGURABLE UP TO 16 PIPS

Technical Director

Director

Producer



PRODUCTION SEATING ASSIGNMENTS

1	
2	
3	
4	
5	
6	
7	
8	
9	

10	
11	
12	

2 TNDV SALLIE 3D 2024  
Scale: 1:18

**TNDV**  
TELEVISION



TNDV  
TELEVISION  
contact@tndv.com  
877-959-TNDV

515 Brick Church Park Drive  
Nashville TN 37207

**SALLIE  
40' EXPANDO  
TRUCK**

**TNDV SALLIE**

FILE: TNDV\_SALLIE\_3D\_2024.dwg  
PRODUCTION DRAWINGS BY: Joseph Feater

SHEET INFO:

SALLIE  
BLANK  
FLOOR PLAN

NOTES:

UPDATED:  
Date: 9/10/24  
Time: 9:59:05 AM  
**Ver.005**